

WHICH goddess ARE YOU?

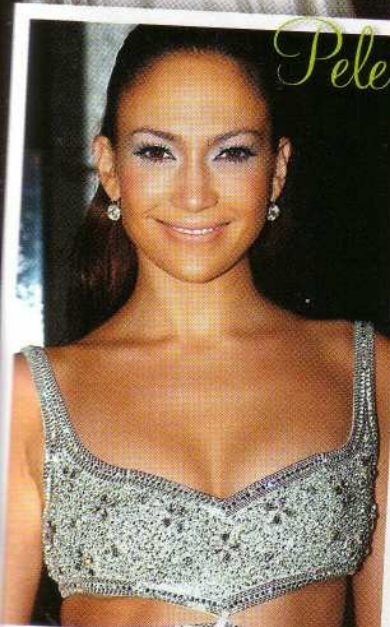
Discover your inner goddess and find out what you should be doing with your life

Before modern-day zodiac signs, our female ancestors were born under the domain of goddesses, rather than the moon, astrological planets and sun. Things such as the season you're born in and the phase of the moon determine your

goddess sign, and influence your personality and values. "Every action, projection of self and treatment of others is a reflection of your archetypal goddess sign," says Anita Ryan, creator of the website www.goddess.com.au "Just look at Sarah Jessica Parker," says Anita. "She's the

classic Athena archetype – strong, independent and a warrior princess. The downside to this strength is she'd feel ashamed to ask for help in case it made her appear weak. "Jennifer Lopez is a Pele girl, through and through – she's passionate and

social, but prone to channelling her energies in the wrong directions." Goddess power is about a modern woman managing to keep it together on the career, home and social fronts. Understanding your sign is one way to get through each day smiling.



Look to the stars

We're affected by different goddess energies at different times but at our core, our goddess sign defines how we manage our choices and destinies. Here are the 12 goddess signs...

Zodiac sign	Your ruling goddess	Areas of strength	Areas for improvement
ARIES Mar 21 – Apr 20	ATHENA	Born leaders, powerful and zesty, independent and resourceful.	Use your courage to ask for help and allow others to help.
TAURUS Apr 21 – May 21	JUNO	Stable relationships, material security and enriched home life.	Don't rely on others for happiness. Strengthen relationships from within.
GEMINI May 22 – Jun 21	PERSEPHONE	Vital and intelligent, innocent and fickle with an amazing capacity for self-empowerment.	Stop playing the drama queen. Try honesty instead, both with yourself and others.
CANCER Jun 22 – Jul 23	DIANA	Powerful and protective, Diana rules over nature, fertility, children and providence.	Look after your own need for love instead of always giving it away to others.
LEO Jul 24 – Aug 23	PELE	Full of passionate energy, loves being the life of the party.	Cut your losses and work towards rewarding projects.
VIRGO Aug 24 – Sep 23	HESTIA	Hestia girls are creatures of habit and organisation, purity, sincerity, sanctity and safety.	What's the self-sacrifice for? Break from your oppressive patterns.
LIBRA Sep 24 – Oct 23	VENUS	Venus women are stylish and appreciate acts of love, pleasure and romance.	Revel in your playful character but keep it appropriate to each situation.
SCORPIO Oct 24 – Nov 22	MEDUSA	Courageous and strong, with an abiding patience for seeking vengeance for wrongdoings.	Articulate your feelings and stay in control of creative expression rather than physical destruction.
SAGITTARIUS Nov 23 – Dec 22	RHIANNON	Welsh goddess of fertility and rebirth, transformation, wisdom and magic. Loves adventure, travel.	Stop focusing on the horizon occasionally and anticipate others' needs.
CAPRICORN Dec 23 – Jan 20	DEMETER	Champion of causes, you stop at nothing to achieve your goals.	Forget your ingrained sense of self-sacrifice. Concentrate on what makes you happy.
AQUARIUS Jan 21 – Feb 19	HATHOR	Hathor women have the gift of shape-shifting, reinventing themselves for fresh inspiration.	With each new manifestation, remember those you leave behind. Some hate change.
PISCES Feb 20 – Mar 20	OSHUN	Goddess of universal love and sensuality, you're generous with time for yourself and others.	Stop drifting along without direction and find a place where you can simply be.